



leadershipai

Transforming Leadership in the Age of AI



Artificial intelligence is reshaping the workplace, sparking a dynamic shift in how we work and collaborate. As organizations navigate the complexities of this transformative technology, crafting an AI strategy remains an ongoing puzzle. Leaders must transition from doing and

deciding to coaching, motivating, and inspiring. However, many leaders are still unsure about the possibilities AI brings and how vital their role is in making it all work. Embracing digital disruption is a journey, and understanding its potential is a game changer!



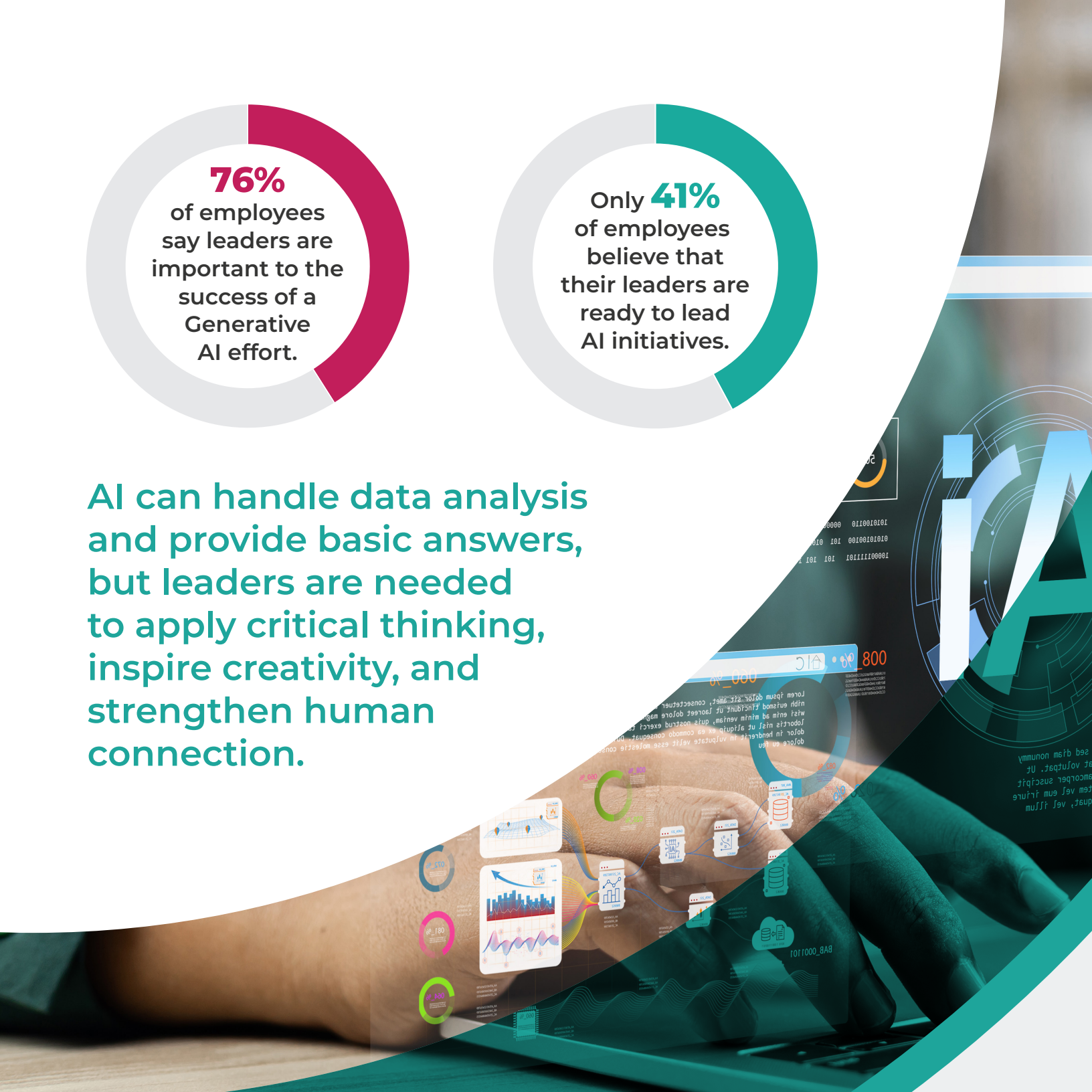
76%

of employees
say leaders are
important to the
success of a
Generative
AI effort.



Only **41%**
of employees
believe that
their leaders are
ready to lead
AI initiatives.

AI can handle data analysis
and provide basic answers,
but leaders are needed
to apply critical thinking,
inspire creativity, and
strengthen human
connection.



Shifting Mindsets with LeadershipAI

LeadershipAI is a learning journey focused on the evolving role of leaders, emphasizing human connection alongside AI integration. This program is designed for existing leaders with foundational leadership skills who need to apply those skills in a new context.

The program includes microlearning opportunities in a variety of interactive options that are asynchronous but time-bound:



Discussion forums



Podcasts



On-the-job activities



Articles



Self-reflection



Infographics



Missions



Job aids



Polls



iPDFs



Videos



Online games

Program Structure

The experience is a 4-8 weeks based on deployment choices such as duration of modules and inclusion and timing of cohort conversations.



The Learning Journey

1 Get Started

- Kickoff
- Video introduction
- Readiness assessment

2 Module I: Embrace AI

- Define AI
- Explore the impact on employees and business
- Begin using AI
- Reflect on ethical considerations

3 Cohort Conversation

- Explore leader comfort level with AI and understand where your perspective comes from
- Discuss industry and organizational implications
- Identify implications for the roles on your team

4 Module II: Elevate Skills

- Understand the evolving role of leaders
- Know the benefits of incorporating AI into your leadership approach
- Level up critical thinking, coaching, and change leadership skills

5 Module III: Create Connection

- Maintain a human-centered approach, including a focus on empathy and growth mindset
- Incorporate change communication skills
- Learn to spot and address bias

6 Cohort Conversation

- Discuss how your team members are feeling about AI
- Explore ways to create a change-resilient team
- Find opportunities to empower teams to use AI



gpstrategies.com | info@gpstrategies.com



**Schedule Your
Demo Today.**